
A large flock of chickens, including various breeds like brown, black, and speckled, are gathered in a lush green field. In the background, a red barn with a cupola is visible, surrounded by dense green trees and rolling hills under a bright, cloudy sky. A white horizontal line is positioned above the main title.

The Glen Brook Farm

2024 in Review

Farm Team '24





Summary

The 2024 season was a huge success! We experienced record yields, expanded programming, and developed exciting new infrastructure

Gabriel's Field

- 10,053 lbs of vegetables
- 66 different varieties

Animal Products

- 2,010 lbs of meat into freezers
- 24,012 eggs

Community Engagement

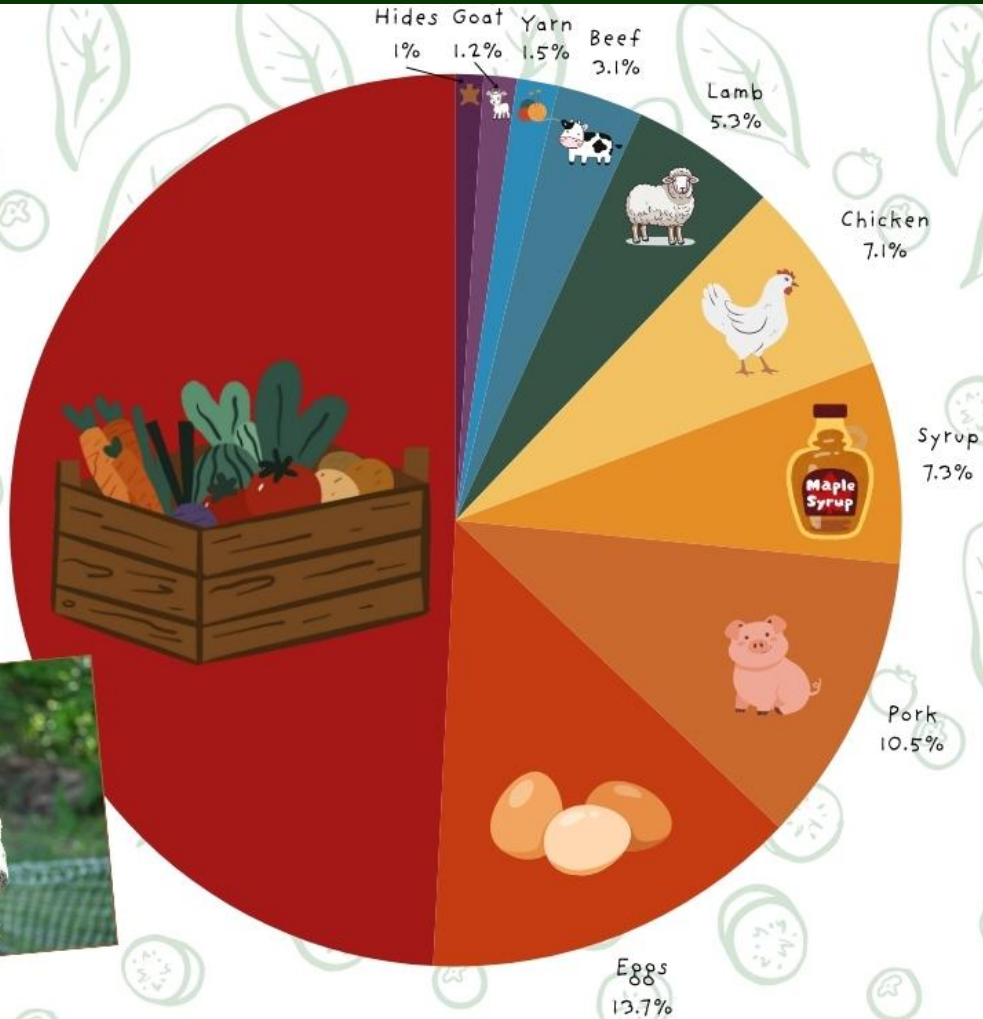
- 1,000+ visitors to Gabriel's Field
- 1,500 lbs of donated veggies



2024 FARM VALUE

The value of the educational experiences provided on the Glen Brook farm are immeasurable!

Produce
49.2%



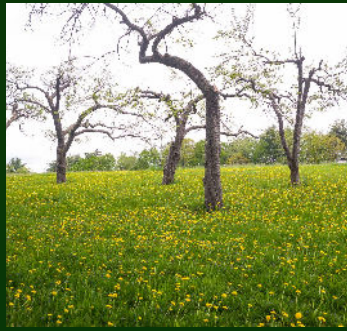


Farm Programming

- 6,000 yards of Glen Brook yarn for a growing fiber arts program
- Medicinal herbs harvested for salves and teas
- Built bokashi bins, biochar pits, vermicomposter, Johnson-Su Bioreactor
- Hide tanning
- Three sisters mounds
- Food preservation
- Planting, cultivating, harvesting, eating, & gleaning all from within Gabriel's Field, the heart of the Glen Brook farm program

Impact of Gabriel's Field Fund

- Thank to the generous support of donors, the following projects were completed this year:
- New Winstrip planting trays
- Transition to overhead irrigation in the garden
- 21 newly installed production age fruit trees



A group of children, including a girl in a maroon hoodie and a girl in a teal jacket with a backpack, are standing in a grassy field. They are looking towards a black cow that is grazing on the grass. The scene is outdoors with trees in the background and a cloudy sky. The text 'Thank' is overlaid in a green rounded rectangle in the top right corner, and 'You' is overlaid in a green rounded rectangle in the bottom left corner.

Thank

You